

CASSP

CASSP helps children and adolescents with emotional disturbances to gain access to needed services. Services are planned collaboratively with the child's or adolescent's family, mental health system, the school and other agencies. CASSP supports best practice and assists in communication among all those who serve children.

CASSP Principles:

Child-Centered
Family-Focused
Community-Based
Culturally Competent
Multi-System
Least Restrictive/Least Intrusive

Children's Mental Health Unit (CMHU)


Lehigh County's CMHU assists families in accessing or coordinating Medical Assistance behavioral health services for children and adolescents.



CASSP (Child and Adolescent Service System Program)
And
Lehigh County Children's Mental Health Unit (CMHU)

County of Lehigh
Government Center
17 South Seventh Street
Allentown, PA 18101-2401
Phone: 610-782-3376
Fax: 610-820-3689

CASSP and Mental Health Services for Children/Adolescents

 **CASSP (Child and Adolescent Service System Program)**
And
Lehigh County Children's Mental Health Unit



Lehigh County Government Center

Tel: 610-782-3376

Types of CASSP Meetings: (Child and Adolescent Service System Program

CASSP Request for Authorization for CRR (Community Rehabilitative Residence) or RTF Placement (Residential Treatment Facility):

Meetings are scheduled after a Doctor recommends out of home mental health treatment; RTF or CRR.
How can referrals be made? Referrals can be made for children who have Medical Assistance (MA) benefits. Contact the Children's Mental Health Unit at 610-782-3376 for more information.

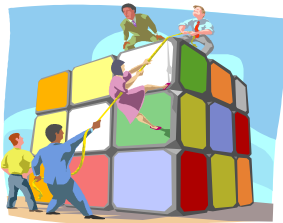
CASSP System Coordination Meeting:

This is a meeting for children and adolescents who have complex needs. Meetings include the child, family, or custodial party as well as all Department of Human Service (DHS) offices and agencies that are involved including MBH (Magellan Behavioral Health).

These meetings are utilized to intervene early and prevent out of home placement.

Who can request a meeting? Anyone; family, provider, school, MBH, Lehigh County DHS, or Probation.

How can a request be made? Contact CASSP at 610-782-3376.



Mental Health Placements:

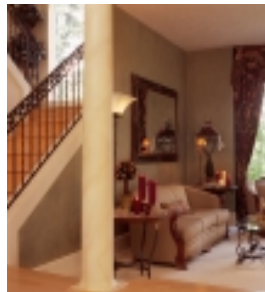
Community Rehabilitative Residence (CRR)

The child attends school within the community of the home.

CRR Host Home: intensive out of home treatment services. The child **resides with a family** who is trained to work with children experiencing behavioral and emotional difficulty and the agency provides individual, group and family therapy, and medication monitoring.

CRR Group Home: intensive out of home treatment services. The child **resides within a group home**. Staff is trained to work with individuals experiencing behavioral and emotional difficulty and provides individual, group and family therapy, and medication monitoring.

Process: available to children with Medical Assistance who meet medical necessity criteria for this level of care. Services must be **prescribed by a psychologist or psychiatrist** and have a CASSP Authorization Meeting at the county office.



Residential Treatment Facility (RTF)

This is the most intensive out of home treatment service. The child resides at a facility and receives 24 hour supervision. Individual, group, family therapy and medication monitoring is available to address behavioral treatment goals. The child attends the on-grounds school provided by the facility.

Process: available to children with Medical Assistance who meet medical necessity criteria for this level of care. These services must be **prescribed by a psychiatrist** and have a CASSP Authorization Meeting. A current evaluation, referral form and release of information are forwarded to the Lehigh County CASSP Unit.



CASSP Authorization Meeting : includes all parties involved in the child's life including, but not limited to; current provider, child, family, child serving system, school, and MCO (Managed Care Organization.) The request for authorization is submitted to the MCO or DPW (Department of Public Welfare) for approval.